

DC-ITSafe – GUARDIAN OF IT

THE WORLD'S MOST SECURE LOCATION – IN YOUR COMPANY



You feel secure in your company. But does this also apply for your IT-infrastructures?

Prevent the loss of essential data and the resulting production downtimes and avoid financial losses as well as image damages because of IT breakdowns. Often companies become aware of their dependencies from their data when it is already too late.

Protect yourself with our DC-ITSafe, your personal guardian of IT, with high-available IT protection against all physical hazards. No loss of data, no production downtimes, no financial losses!

- **IT-security? The life insurance for your IT- and data structures!**
You already realized: Your sensitive data should not be saved on external servers. Protect your servers internally with our DC-ITSafe against all essential physical hazards like theft, vandalism and natural forces.
- **Your company is still growing? The DC-ITSafe is growing with your requirements!**
Modular, expandable, removable constructions offer full flexibility.
- **Standards? We can do better than that!**
A rack depth of 1200 mm, double-wing doors and twelve additional vertical height units are standard features and this on less than 2 sqm.
- **Hot Business? The DC-ITSafe always keeps cool!**
Our cooling units comply with industrial standards and are specially designed for a permanent operation and are self-regulating according to the heat development of your servers.
- **Proven quality? Verified by experts!**
External quality controls ensure the uniform quality of the DC-ITSafe and the production of our IT security solutions.
- **Our special benefit for hot situations!**
The DC-ITSafe was successfully tested free-standing and a firing of five sides and is the first mini data center worldwide tested as a complete system.



DESIGNED FOR ALL INDUSTRIAL SECTORS

From the industry to health care and office environments

Do you have IT-infrastructures within your company?

The GUARDIAN OF IT meets all the requirements and varieties of different locations and is designed for:

- Small and medium-sized companies
- Companies with decentralized structures (logistics and industrial companies with different locations, retailer)
- Medical facilities like bigger joint practices or hospitals
- Accountants, lawyers, engineering offices, architects or marketing agencies

Benefit from the space-saving allround protection for your IT-infrastructures. You decide the location of the DC-ITSafe completely independent from any spacious condition in your company. Dusty production sites of high noise levels or boiler rooms of increased humidity? No problem for our DC-ITSafe! Our Mini Data Center fulfills your requirements and protects your sensitive data even in most challenging conditions.

High requirements, high standards – because it is about your data.



RZ-Products GmbH – the synonym for high-end IT-security products “Made in Germany”, focussing on the development, production and marketing of innovative solutions for the equipment of data centers. Worldwide companies trust our expertise by implementing our quality controlled and certified products verified by neutral and recognized institutions.

With our expert knowledge in the field of IT-security we developed an extensive product portfolio during the past few years, always on the pulse to comply with recent requirements. We supply your customized DC-ITSafe, ready for immediate use.

Our commitment as innovator in the IT sector resulted in the development of the DC-ITSafe. Following our corporate slogan “We protect IT” the modular compact data center protects the core of your business – your data – against fire, extinguishing water, explosions, corrosive gases, burglary as well as theft, noise and dust. Protect your know-how in your own premises, keeping an eye on your data. With our plug and play solution you can minimize the risk of unauthorized access, burglary or industrial espionage.

Decide for one hundred percent protection and benefit from our Guardian of IT!

CONSTRUCTIONAL FEATURES

Modular, flexible and space-saving – this is our DC-ITSafe!

- Sheet steel cassette construction
Finish: Corpus aluminium white (RAL 9006), doors traffic red (RAL 3020) (different colours available upon request)
- (Re-)movable, expandable by linking modules
- Patented “click” assembly method for quick and easy installation
- Self-locking, multiple automatic locking by massive swing fasteners and tightness elements for increased protection against unauthorized access
- Key lock and/or pin-code-terminal
- Weight empty: 1,100 kg
Max. capacity 19”: 1,000 kg
- Outer dimensions:
W 1452 x H 2185 (56HU) x D 1470 mm
W 1452 x H 2425 (62HU) x D 1470 mm
(different sizes available upon request)
- 19” profile frames, dimensions 800 x 1,200 mm
44 HU horizontal + 12 HU vertical = 56 HU
50 HU horizontal + 12 HU vertical = 62 HU
- Double-wing doors for reduced space requirements
- 4 ea. soft ducts, hard ducts available upon request, DN 200 for side walls (different options available)



PROTECTION AGAINST



CERTIFICATES

- EI 90 as system test freestanding, firing from 5 sides according to EN 1363 with at least 40 minutes within the limit values (50 K temperature increase and relative humidity < 85 %) according to EN 1047-2
- Burglar protection RC 2 following EN 1627
- Dust-/water protection IP 56 according to EN 60529
- Smoke gas tightness following EN 1634-3
- Basic EMC-protection



DC-ITSafe – Modularity at the highest level

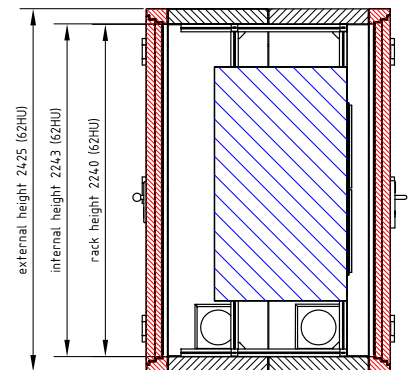
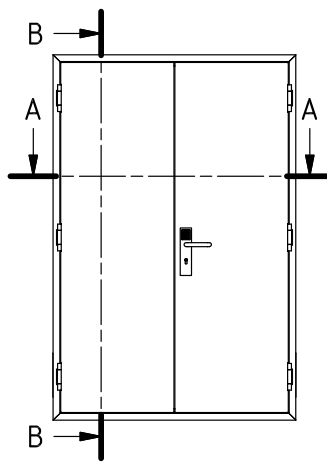
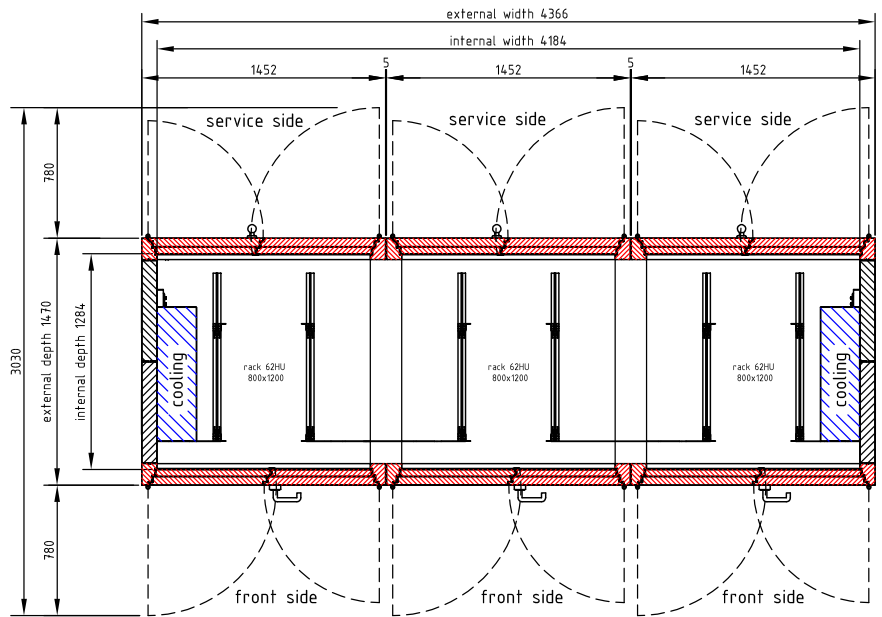
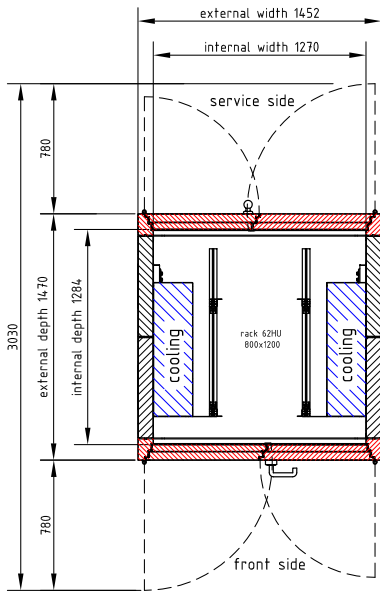
DESIGNS

Our DC-ITSafe is available in different versions, which differ by variable positionable notches for all important connections. Thus we comply with your individual requirements. The cable ducts can be installed either in the side, floor, or ceiling elements.

If and when required any number of Mini Data Centers can be interlinked. The DC-ITSafe grows with your demands guaranteeing highest possible flexibility.



Flexibility in detail



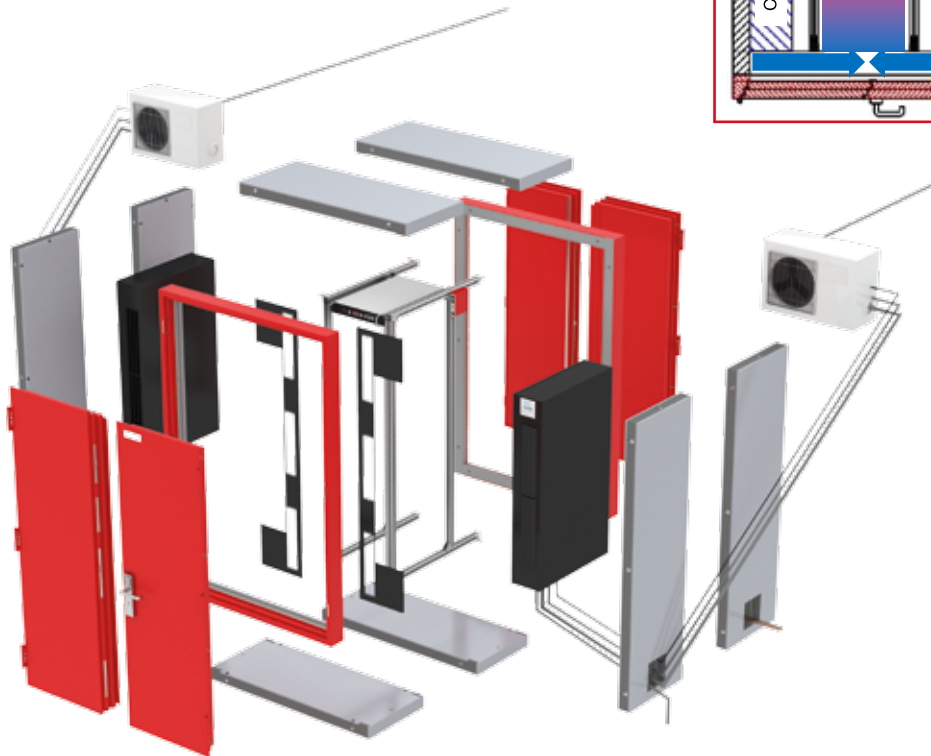
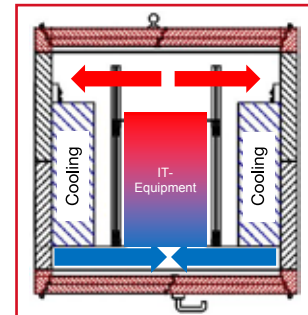
TECHNICAL DRAWINGS OF THE DC-ITSAFE

Our Mini Data Center in different perspectives allowing an insight into the core with an illustration of the DC-ITSafe components for the best possible protection of your data.

FITTINGS AND EQUIPMENT

In addition to the extensive standard equipment we offer various optional fittings to complete your DC-ITSafe.

- Monitoring and energy management systems
- 19" early fire detection and extinguishing systems
- Uninterruptible power supply
- PDU's
- (19") rack accessories



WHEN IT GETS HOT ...

In order to ensure that your DC-ITSafe keeps cool in case of increased temperatures, fully redundant cooling solutions of energy efficient inverter technology are standard features. The compact split units are composed of an indoor unit within the DC-ITSafe and an outdoor unit for the outdoor positioning. Clearly, the high flexibility of this cooling method is the secret of success.

Thanks to the inverter technology, the inner temperature of the data center is self-regulating automatically and adapts to the operating conditions.

Increased server performances require increased cooling capacities whereas reduced performances require lower capacities. Consequently the cooling system operates gently and energy-efficient.

Fireproof IT-protection! Be on fire as well.

EARLY FIRE DETECTION

To be on the safe side in case of a fire the Guardian of IT is equipped with a state-of-the-art early fire detection software which can be completed by an integrated extinguishing system.

A three-stage safety concept, consisting of an early smoke detection and highly sensitive sensors; the automatically regulated system shutdown and the following fire extinguishing ensure the fast crisis management in cases of emergency. The master unit, extinguishing agent Novec 1230, capacity max. 4.4 m³, is being supplied including power supply and battery buffer. An extended version of max. four slave units, with ea. 4.4 m³, is also available upon request.



The optimized cold/warm area separation and the directed airflow ensure additional energy efficiency. Upon request the DC-ITSafe is also available either without cooling unit or a non-redundant cooling unit. Additionally a water-cooled solutions is available.

Available power capacities:

1.6 kW –4.5 kW | 2.7 kW –6.7 kW | 3.3 kW –8.1 kW



7 steps towards your individual DC-ITSafe

1. Your inquiry

Our configurator presents multiple design possibilities for your DC-ITSafe highlighting a planning support at the highest level at the same time. For further questions or information you may require, please do not hesitate to our telephone support for further advice at any time. Alternatively our comprehensive checklist includes all required information about installation site, delivery conditions and equipment.

2. Calculation

Our convincing and transparent pricing keeps an eye on your success.

3. Our individual quotation

Your wish is our demand! We will prepare individual quotations for each project following your requirements.

4. Order Confirmation

You check our quotation in detail. With your confirmation you decide for a professional cooperation and thus automatically for a high-available IT protection.

5. Production of your DC-ITSafe

In our production every DC-ITSafe is produced custom-fitted. You will be receiving a product, designed and produced in Germany. Made in Germany par excellence.

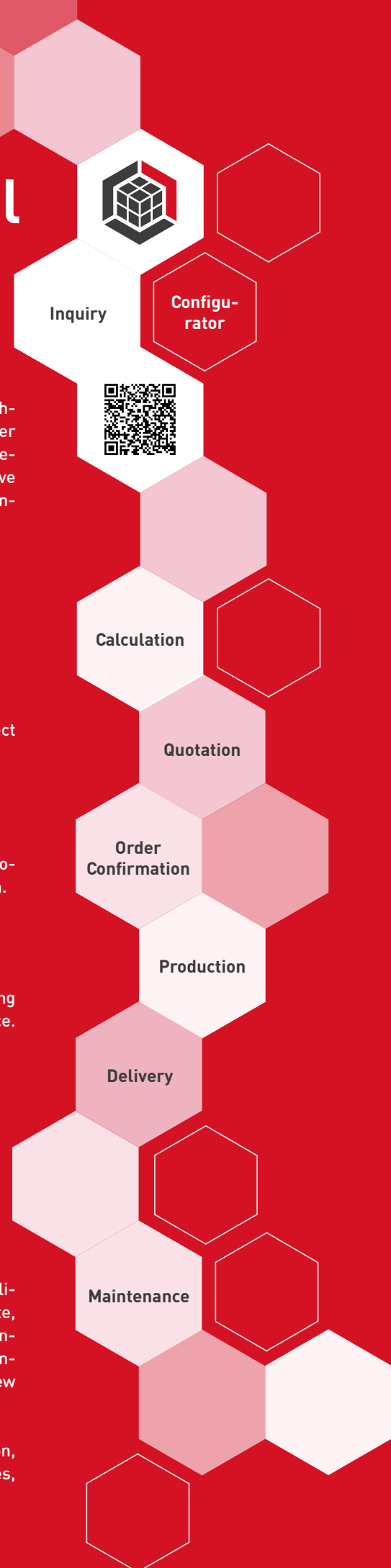
6. Delivery and installation of the DC-ITSafe

Our expert team will install the DC-ITSafe on-site including cooling solution, early fire detection system with integrated extinguishing, guaranteeing the smooth handover and commissioning.

7. Maintenance concept and monitoring

Even after the successful delivery we are a trustworthy partner for our clients. For a more secure and economic operation of the DC-ITSafe our affiliate, RZservices, offers individual, tailored concepts: We arrange and plan the maintenance intervals and coordinate the maintenance services, so that you can concentrate on your daily business. Moreover, we ensure a round the clock overview with monitoring tools developed by us.

The permanent control of the data center not only shows the operating condition, but enables IT and facility managers far more to eliminate foreseeable failures, increased energy consumptions or unnecessary costs.



HESS DRUCK

Turnkey Mini Data Center with highest-availability protection

For the traditional company in the Swiss Thurgau we realized a DC-ITSafe, guaranteeing highest data security due to its unique quality features - the number one in the market, "Made in Germany".

„The modular highest availability safe offers all important functions, like e.g. alarm system, a fire surveillance and extinguishing, a redundant cooling and an extensive monitoring system. Special highlight of the project: The mobility of the safe! Currently we are located here but in case of a possible data center expansion we can choose another location. The safe is accessible from both sides but despite the extensive equipment it requires a minimum of floor space.“

(Fredri Roeschli, Hess Druck AG)



SOLVAY GMBH

Decentralized security in tiny spaces

The internationally successful chemical plant, the Solvay Group with more than 30,000 employees was founded in 1863. An on-site analysis revealed that the DC-ITSafe is the most flexible, space-saving and secure solution for the protection of the internal IT. As a result, RZproducts implemented the worldwide most fire resistant Mini Data Center in cooperation with its affiliate, proRZ, in Bad Hönningen. IT-protection at the highest level!



RZservices

Service hotline

Availability 24 hours

Troubleshooting/Emergency service

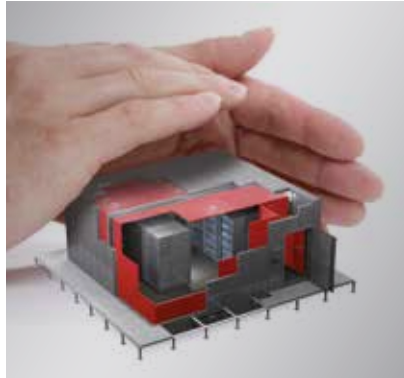
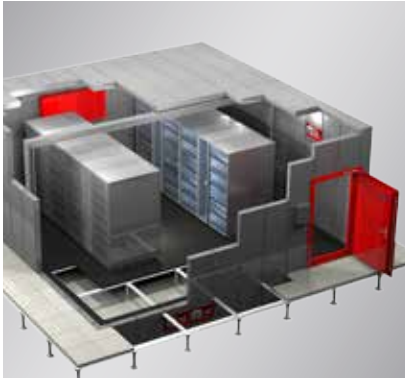
24 hours, 7 days a week, 365 days a year

Cost transparency

By defined services and costs

INTELLIGENT SOLUTIONS

FOR HIGHLY EFFICIENT DATA CENTERS



DC-ITRoom

The room solutions GranTe and QuartzITe offer the best possible security for your IT infrastructures. They are modular, scalable and offer proofed or rather certified protection against physical dangers, like fire, explosion, water, unauthorized access, etc. The DC-ITRoom products guarantee an IT functional reliability.

DC-ITShielding

DC-ITShielding offers comprehensive security against electromagnetic interferences for data centers: A high frequency shell as shielding surrounds the racks to be protected so that electromagnetic interferences from the outside cannot penetrate. Also the tapping of sensitive data is impossible, because the radiation of computers does not penetrate to the outside.

DC-MonIToring

The Monitoring systems of the RZproducts make an important contribution to a professional energy management and to an uninterruptible monitoring of the IT. They show interruptions directly and also improve clearly the profitability of the IT operation with the analysis of the energy consumption.



RZ-Products GmbH

In der Aue 2 | 57584 Wallmenroth | Germany
Phone +49 2741 93 21-0
Fax +49 2741 93 21-111
info@rz-products.com
rz-products.com